



# **NSF EPSCoR Research Infrastructure Improvement (RII) Track-1 Preproposal Webinar**



**Dr. Julie Jordan, MRC Chair  
Mississippi State EPSCoR Director**

# Webinar Purpose

The goal for today is to inform attendees about the MRC call for preproposals for the EPSCoR RII Track-1 program.

MRC RFP was released August 18, 2021

<https://www.msepscor.org>

This is not a comprehensive discussion and is **NOT** a substitute for reading the solicitation.

# EPSCoR Mission and Goals

EPSCoR's Mission: Enhance research competitiveness of Mississippi by strengthening STEM capacity and capability.

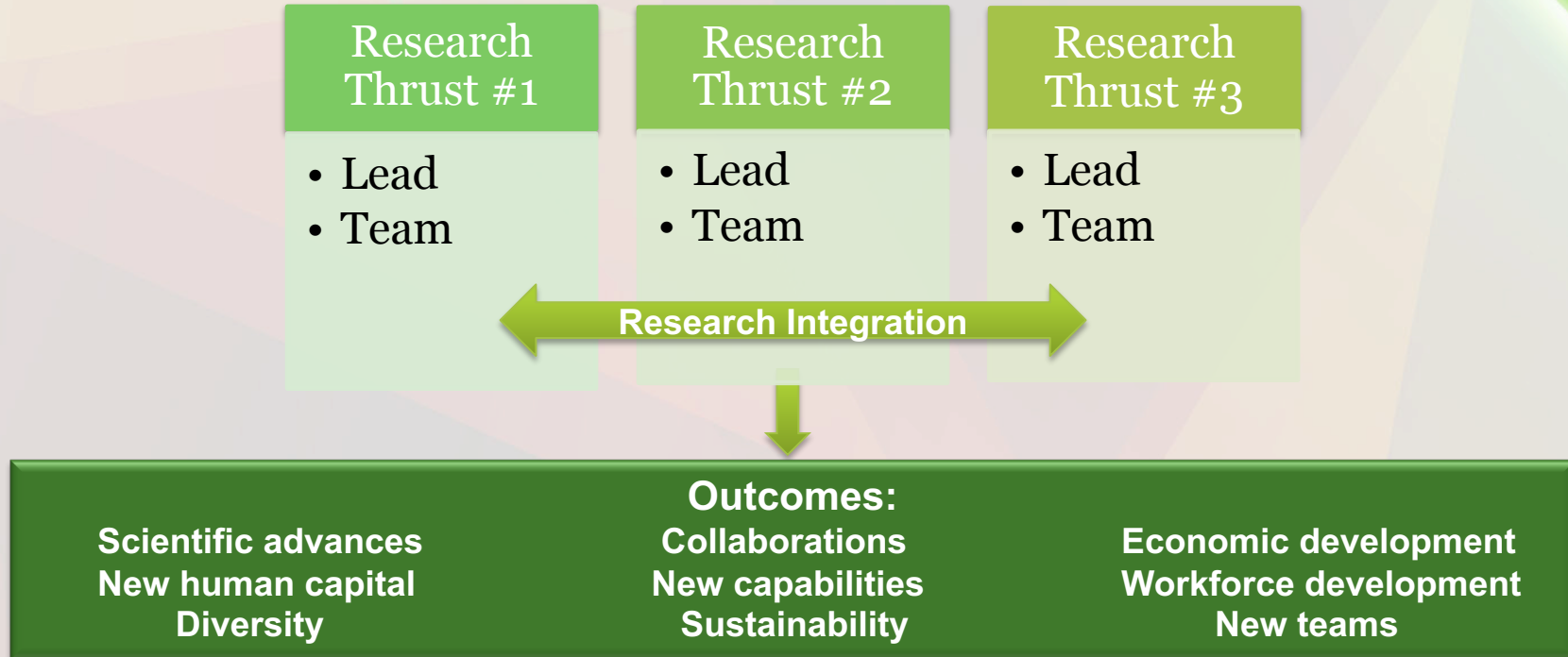
## Goals

- Catalyze research capability across Mississippi
- Establish STEM professional development pathways
- Broaden participation of diverse groups and institutions in STEM
- Effect engagement in STEM at national and global levels
- Impact Mississippi's economic development

NSF EPSCoR's intent is for the RII Track-1 proposals to include elements that respond to all of these strategic goals!!!

# Conceptual RII Track-1 Project

## Research Topic of Mississippi and National Priority



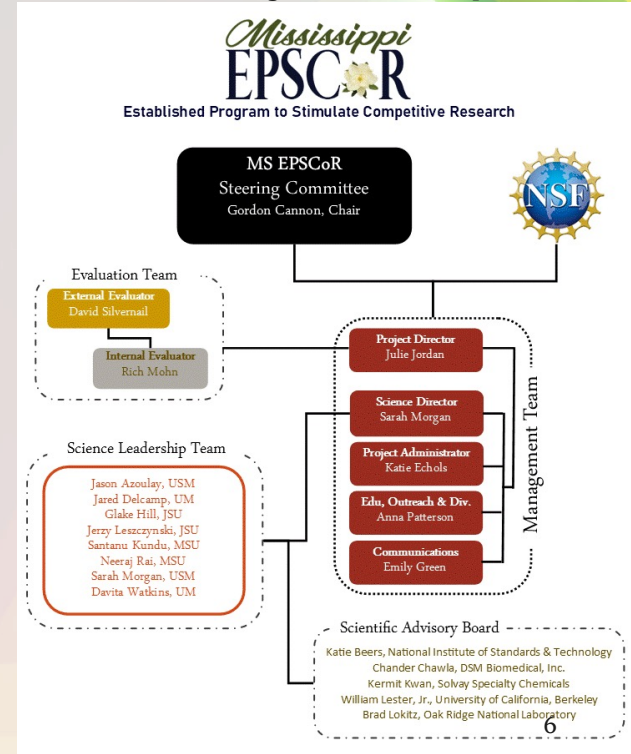
# MS Science & Technology Plan

- One proposal from Mississippi
- Topic and proposal **must** align with the approved MS S&T Plan
  - <https://mississippiresearchconsortium.org/static/ST-Plan.pdf>
- Research should be appropriately balanced between all four MS research institutions – JSU, MSU, UM, USM.
- Inclusion of PUIs is also encouraged

# Administrative Structure

- Project Director/PI (MSU): Administrative lead and primary contact with NSF & MRC.
- Co-PIs (4 max):
  - Science Director
  - Science Leadership Team
- State EPSCoR Office:
  - Project Administrator (MSU)
  - Fiscal Administrator (MSU)
  - EOD
  - Communications Professionals
  - Internal & External Evaluators

## Current Project Example



# Tips for Success

- Follow the solicitation
  - Keep merit review criteria in mind.
- Write to reviewers and panel – experts in the field
- Integrate project elements and jurisdictional impacts
- Propose building research capacity and capabilities
- Emphasize sustainability
- **Research should be driven by questions or hypotheses that place the project in the current context of the field.**



# New Human Infrastructure

Faculty hires can be a powerful project component

- Should be included where expertise/capacity is needed
- Should be clearly justified by proposed work
- Programmatic Terms and Conditions will **require** hiring to occur as proposed.
  - Make sure you have institutional support for new hires.
  - NSF may withhold continued funding if you are unable to hire as proposed.



# Other Things to Consider

- RII Track-1 is a cooperative agreement with greater accountability and oversight than other NSF programs.
  - Incremental funding
  - Increased reporting and review requirements
    - Annual reports (50+ page narratives, data collection, financial reporting, additional reporting elements in Research.gov)
    - Two panel reviews (Reverse Site Visit –Yr 2; Site Visit –Yr 4)
    - Project wide meetings (1-2 per year)
- Make sure your team is committed to this!
- Build in support to handle the administrative demand.

# Other Things to Consider

- \$20M Award over 5 years
  - F&A
  - Project Management
  - Evaluation
  - Other Project Elements
- 20% Cost Share Requirement
  - Typically in-kind contributions

While the MRC preproposal does not require a budget, the work being proposed should be reasonable for the award amount.

# Timeline

- Preproposals Due: October 15, 2021
- External Review Complete: November 8, 2021
- Presentation to MRC by Top Rated: November 17, 2021
- Announcement of Selected Preproposal: November 30, 2021

## NSF Full Proposal Timeline

- Letter of Intent Due: July 2022
- Full Proposal Due: August 2022